

Memory Comfortworx® Tile

Style Number	C016W	
Collection	Kindred	
Product Type	Carpet Tile	
Construction	Standard	Data + Performance
Type of Manufacture	ISO 2424	tufted 1/10" 39.4 per 10cm
Aspect	ISO 2424	Multi-Level Pattern Loop
Dye Method	EN 994	100% Solution Dyed
Dimensions	EN 994	50 cm x 50 cm 16 tiles (4 m²) per box
Primary Backing	ISO 2424	Pet Non-Woven
Secondary Backing	ISO 2424	Comfortworx® Tile Matrix Pad Layer Contains 90% Recycled Content
Pile Fibre Composition	ISO 2424	Eco Solution Q® Polyamide 6
Total Thickness	ISO 1765	10.5 mm
Effective Pile Thickness	ISO 1766	1.8 mm
Total Mass	ISO 8543	4536 g/m²
Nominal Total Pile Mass	ISO 2424	644 g/m²
Effective Pile Mass	ISO 8543	217 g/m²
Pile Density	ISO 8543	0.119 g/cm³



Performance

Number of Tufts	ISO 1763	140,000/m² 35.4 per 10 cm
Electrostatic Propensity	ISO 6356	≤ 2.0 kv (Stroll Test)
Use Classification	EN 1307	33 Commercial Heavy
Luxury Class	EN 1307	LC1
Dimensional Stability	EN 986	≤ 0.2%
Impact Sound Insulation	ISO 10140	37db
Sound Absorption Classification	ISO 354/11654	0.30 Aw Class D
Thermal Resistance m² K/W	ISO 8302	0.156 M² K/W Tog 1.56
Dry Slip Resistance	ISO 13893	Pass / No Pulled Loops
Colour Fastness To Light	ISO 105-B02	>6
Flammability	EN 13501-1	Bfl-S1 (Adhered Testing)
Castor Chair	EN 985	≥2.4 Continuous Use

15 Year Commercial Limited Warranty subject to installation in full accordance with manufacturer's instructions and a regular effective cleaning and maintenance programme.

Recommended Installation Method

Monolithic

Quarter Turn

Brick

Ashlar

Random

37dB

Corporate Headquarters +1 800 257 7429 | +1 706 532 7984 | Atlanta +1 404 853 7429 | Bengaluru +91 80 6773 0202 | Beijing +86 10 6568 588 | Chicago +1 312 467 1331 | Dubai +971 4 584 6956 | Hong Kong +852 2623 0371 | Latin America (Miami) +1 305 827 5912 | London +44 207 961 4120 | Los Angeles +1 800 233 1614 | Melbourne +61 3 9939 8543 | Mexico City +55 5010 7600 | Mumbai +91 22 6284 5050 | Nantong +86 400 800 7429 | New York +1 212 953 7429 | Paris +33 (0) 1 81 22 44 39 | San Francisco +1 415 955 1920 | Santiago +562 2431 5000 x 550 | São Paulo +55 11 3071 1702 | Shanghai +86 21 3338 4000 | Singapore +65 6733 1811 | Sydney +1 800 556 302

Coordinating Products

Carpet Tile: **Dream Comfortworx® Tile, Belong Comfortworx® Tile, Together Comfortworx® Tile, Illusion Comfortworx® Tile, Belong Taskworx® Hexagon Tile, Together Hexagon Taskworx® Tile, Dream Taskworx® Tile, Belong Taskworx® Tile, Memory Taskworx® Tile, Together Taskworx® Tile, Illusion Taskworx® Tile**

Product Transparency

Shaw Contract is dedicated to providing clients with a building chemistry that's safe and dependable. Working together, we will help you meet your goals as they pertain to material health. ComfortWorx® products are Cradle to Cradle Certified® Bronze and assessed for impacts on human health and the environment. This product can be recycled. When it's time to replace, we can collect through our re-[TURN] scheme in EMEA.

Material Health & Environmental Certifications

Environmental Product Declaration (EPD)	3rd Party Certified in Accordance with ISO14044, ISO14025 & EN15804
Environmental Guarantee*	Take Back Policy Offered For All Comfortworx Products
ISO 9001	Certified
Country of Origin**	United Kingdom
BREEAM Contribution Credit	Certificate of Approval Schools/Offices/Health/Industrial Shed Retail

WELL V2 Contribution Credit

X11 Long Term Emissions Control Part 2: Flooring Optimization	M1> Emissions Class For Building Material
--	---

Leed v4 Contribution Credits

MR Credit: Building Product Disclosure and Optimization Environmental Product Declarations - Option 1: Environmental Product Declaration (EPD)	3rd Party Certified in Accordance with ISO14044, ISO14025 & EN15804
MR Credit: Building Product Disclosure and Optimization Material Ingredients - Option 1: Material Ingredient Reporting	HPD (Version 2.1)
EQ Credit: Low Emitting Materials Option 1: Product Category Calculations	Certified

Air Quality

Indoor Air Comfort Gold	Certified
M1	Certified

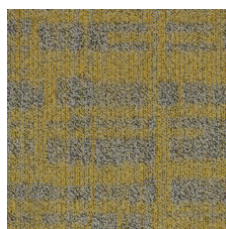
Memberships

WGBC Framework	WGBC Framework
UKGBC	UKGBC
Emirates Green Building Council	Emirates Green Building Council
Chemsec	Chemsec

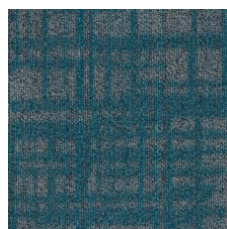
Available Colorways



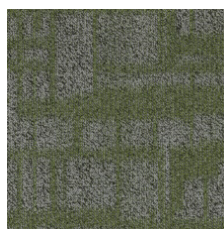
Warmth 48111



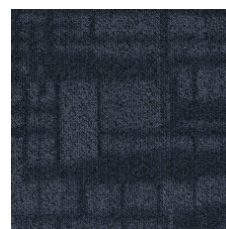
Golden 48211



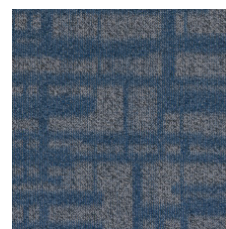
Comfort 48323



Greenery 48370



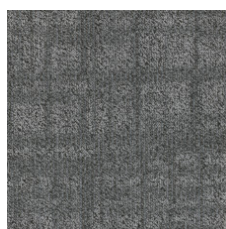
Solace 48485



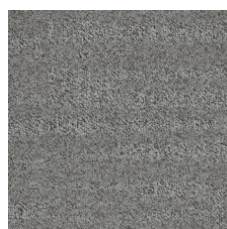
Serene 48486



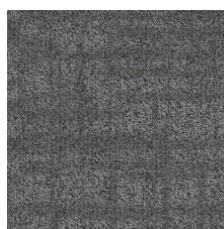
Blanket 48505



Hearten 48515



Greige 48516



Ponder 48530



Sense 48535



Rainstorm 48536



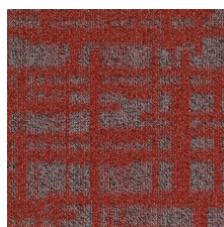
Slate 48557



Apricot 48675



Nestle 48760



Fire 48856



Rosewood 48870



Insight 48979

Additional Information

**Manufactured in ISO 9001 certified facility. Meets or exceeds all local and national regulations in country of manufacture.

[Installation Guidelines](#)

[15 Year Commercial Limited warranty](#)

Specifications are subject to nominal manufacturing variance. Material supply and/or manufacturing processes may necessitate changes without notice.

This product is an exclusive design and may not be duplicated in any manner. Use of this design in the creation of another product design is also strictly prohibited.

Visit shawcontract.com/testing for more information.



Corporate Headquarters +1 800 257 7429 | +1 706 532 7984 | Atlanta +1 404 853 7429 | Bengaluru +91 80 6773 0202 | Beijing +86 10 6568 588 | Chicago +1 312 467 1331 | Dubai +971 4 584 6956 | Hong Kong +852 2623 0371 | Latin America (Miami) +1 305 827 5912 | London +44 207 961 4120 | Los Angeles +1 800 233 1614 | Melbourne +61 3 9939 8543 | Mexico City +55 5010 7600 | Mumbai +91 22 6284 5050 | Nantong +86 400 800 7429 | New York +1 212 953 7429 | Paris +33 (0) 1 81 22 44 39 | San Francisco +1 415 955 1920 | Santiago +562 2431 5000 x 550 | São Paulo +55 11 3071 1702 | Shanghai +86 21 3338 4000 | Singapore +65 6733 1811 | Sydney +1 800 556 302

© 2024 Shaw Industries Group, Inc., a Berkshire Hathaway Company
May 17, 2024

3 of 3